



# 2020 Annual Report

A Year of Accomplishments.



@semasingida

[www.sema.or.tz](http://www.sema.or.tz) | P.O BOX 365 Singida | Industrial Area,Utemini Street



# Contents



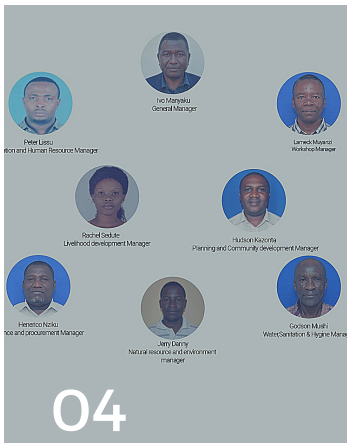
Message from Board Chairman



Message from General Manager



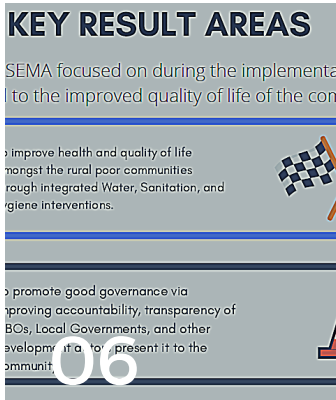
About SEMA



SMT



Our Partners



Key Result Areas



Accomplishments



COVID-19 Response



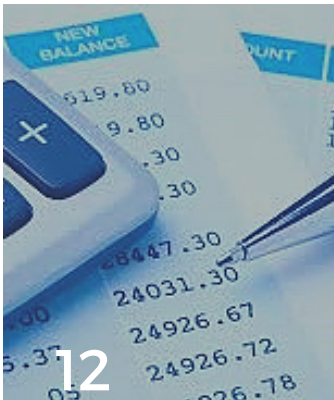
Future Plans



visibility & Media



Success Stories



Finance



# ABBREVIATIONS

---

**Act 2-Accountability Change Tanzania**  
**CAF-Coounity Accountability Forums**  
**CMSG-Community Managed Saving Groups**  
**CSO-Civil Society Organization**  
**CBO-Community based Organization**  
**DCs-District Councils**  
**ECCE-Early childhood care and Education**  
**ILO-International Labour Organization**  
**IGAs-Income Generating Activities**  
**INGOs-International Non Governmental Organizations**  
**LSF-Legal Service Facility**  
**NGO-Non Governmental Organization**  
**PWDs-People with Disabilities**  
**SEMA-Sustainable Environment Management Action**  
**SF-Stromme Foundation**  
**TNA-Training Needs Assessment**  
**TVET-Technical and Vocational Education Training**  
**URT-United Republic of Tanzania**  
**UKAID-United Kingdom Agency for International Development**  
**USAID-United States Agency of International Development**  
**WFP-World Food Program**  
**YES-Youth Employment through Skills Enhancement**

ENJOY YOUR READING!!!





**JORAM ALLUTE**

**SEMA BOARD  
CHAIRMAN**

## **MESSAGE FROM THE BOARD-CHAIRMAN.**

For more than two decades Sustainable Environment Management Action (SEMA) has been working in rural and urban areas in collaboration with International Development Agencies, Government Authorities, Community based Organizations, and non-governmental organizations towards improving the livelihood of rural poor for poverty alleviation through participatory approach and community engagement.

For 21 years SEMA has focused on empowering the rural communities towards addressing challenges and controlling their environment: To achieve all this our programs have focused on the following; improved quality of health and availability of safe and sustainable water, improved attitudes towards environmental protection, improved household income, and economic resilience, promoting integrated nutrition education, WASH and health for improved nutritional status, Enhancing preventive skills and measures against HIV/AIDS spreading among rural communities and promoting of good governance through improving accountability and transparency of CBO, local governments and other development partners.

This year was very different from the previous years as the globe experienced COVID-19 pandemic. Therefore, all our efforts were put in place to make sure that all the implementation plans are executed regardless of the global situation that affected our financing partners and the communities as well. Therefore, to continue supporting the realization of rural poor school-age going children, young boys and girls, male and female youth, and the women's dreams, SEMA adapted different implementation strategies and approaches that conferred well with national health guidelines.

The strength of SEMA has always been its ability to translate its commitments into action through economic inclusion, quality, and inclusive education, strengthening civil societies, enhancing capabilities on climate and gender-responsive planning and budgeting, and recognition of the value of customary knowledge in climate-resilient water governance. Therefore, the organization was able to reach out seven districts; Iramba, Ikungi, Singida, Manyoni, Mkalama Kondo, and Chamwino particularly those areas which are considered as the "hard to reach". Our strong relations with local government in all levels gives us desires and opportunities to intensify our focus on the vulnerable communities. I sincerely thank the members of the Board of Directors, Senior Management Committee, and all other staff for their support that has been extended to the organization especially during a hard time of the COVID-19 pandemic. This has helped SEMA to grow and sustain from strength to strength even in very challenging situations.

Our sincere gratitude is extended to our partners Stromme Foundation East Africa, UKAID, fhi360, EU/WFP, HELVETAS, and the Government for the continued support to achieve our vision and mission.

**Sincerely,**

  
**Joram Allute**





## MESSAGE FROM THE GENERAL MANAGER

For this financial year 2020, SEMA has continued to support the rural poor through rural-funded projects to alleviate poverty.

In partnership with Stromme Foundation East Africa, UKAID, TCDC/Fhi360, EU/WFP,LSF and HELVETAS we supported rural communities to improve their livelihood, Inclusive education, health improvement, employment creation to male and female youth, Climate change and good governance, Nevertheless, with the challenging working environment due to the COVID-19 pandemic, we implemented some most successful, innovative community programs: Youth Enhancement through skills Development-YES in Singida district council, Technical Vocational Education and Training, Bonga, Community Managed Saving groups, Early Childhood Care and Education, Civil Society projects in Iramba, Ikungi and Manyoni district councils, Local Climate Resilient Water and Planning Programme in Mpwapwa, Kondoa and Chamwino district councils, Boresha Lishe in Singida and Ikungi district councils, Youth Revolving Fund in Singida Municipal council and Chamwino district council in Dodoma region , Tulonge Afya in Manyoni district council.and Legal Empowerment Project in all 6 district councils of Singida Region

This report celebrates some of SEMA's success stories. It depicts the testimonies of the beneficiaries whose lives were directly touched by programs either economically, financially, or socially towards poverty alleviation. For instance, in Manyoni at Kisongo 'A'a group of 28 Bonga boys aged between 13 to 19 years old who before the intervention were not able to read and write but after attending a six-month life skill training with special designed program changed the story of their life as of now, they can read and write on their own. Furthermore, the level of resource exploitation has increased through the various capacity-building we are offering in the aspects of financial literacy and management, Entrepreneurship Development Program, and customized technical skills training.

In this report, you will also learn about how we have supported through constructions, renovations, and well as capacity building for caregivers and teachers to improve the learning and teaching facilities in Iramba, Ikungi, and Manyoni district councils.

I would like to thank all the aforementioned stakeholders for their continued dedicated financial support towards rural poverty alleviation in 2020.

**Ivo Manyaku**  
**General Manager-SEMA**



# ABOUT SEMA

Sustainable Environment Management Action (SEMA) is a Singida based Non-Governmental Organization (NGO) which strives to fight poverty and degradation in the rural areas of the poor and marginalized communities of Tanzania mainland. SEMA was registered under the Societies Ordinance Cap. 337 on the 10th March 1998. The organization was also awarded a Certificate of Compliance No. 1594 for Non-Governmental Organizations under Act No. 24 section 11(3) of 2002 on June 2006.

SEMA implements an integrated community development projects focusing on Water and Sanitation, Environment and Natural Resources Management, Good governance and Rural (Livelihood) Development in the rural areas of Singida region, paying special attention to disadvantaged groups, through facilitating dialogue on issues such as access and ownership of resources, the management and flow of information as well as good governance and human rights. SEMA stimulates and supports the villagers' own initiatives and efforts to solve their problems.



## Our Core Values



Integrity, Respect, accountability, Love  
Faithfulness, Commitment Responsiveness,  
, Solidarity, Motivation

## Our Mission



Promoting socio-economic and  
environmental improvement of rural  
communities through natural resources  
management, water & sanitation,  
Education and rural development

## Vision



A socially and economically empowered  
society able to manage its environment  
sustainably



---

# SEMA MANAGEMENT TEAM



Peter Lissu  
Administration and Human Resource Manager



Ivo Manyaku  
General Manager



Lameck Muyanzi  
Workshop Manager



Rachel Sedute  
Livelihood development Manager



Hudson Kazonta  
Planning and Community development Manager



Henerico Nziku  
Finance and procurement Manager



Jerry Danny  
Natural resource and environment  
manager



Godson Mushi  
Water, Sanitation & Hygiene Manager

# OUR PARTNERS



**HELVETAS**



**Stromme  
Foundation**



**World Food  
Programme**



**USAID**



Our sincere gratitude is extended towards our partners  Stromme Foundation East Africa, UKAID, Fhi360, LSF, HELVETAS, EU/WFP, USAID, IIED, TCDC, LSF and the Government for the continued support to achieve our vision and mission.

---

## ABOUT THIS REPORT.

This report provides an overview of the work done by SEMA for the year 2020. The report covers the key results areas, achievements, financial overviews, success stories and plans of the organizations towards 2021.

The reports offer quick snap to government, partners, board of directors, beneficiaries, supporters and the community at large about what SEMA has done for the year 2020. Also, it serves as a legal fulfillment as laid out in NGO Act 2002, and shall be submitted to the office of the Registrar of NGOs.



# KEY RESULT AREAS

The major areas/sectors that SEMA focused on during the implementation of projects, the combined sectorial achievements lead to the improved quality of life of the communities that SEMA serves.

## HEALTH

To improve health and quality of life amongst the rural poor communities through integrated Water, Sanitation, and hygiene interventions.



## GOOD GOVERNANCE

To promote good governance via improving accountability, transparency of CBOs, Local Governments, and other development actors present it to the community.



## LIVELIHOOD.

To promote livelihood development and economic growth in rural areas through the creation of employment and self-employment opportunities for youth and women in the marginalized communities.



## ENVIROMENTAL CONSERVATION

To enhance environmental management via capacity building to CSOs on climate finance tracking and accountability, hence creating collective responsibility towards climate sensitivity. And Improve the Climate-Resilience of Communities



## EDUCATION

To provide an inclusive and better quality education to the rural marginalized and disadvantaged communities



## INSTITUTIONAL DEVELOPMENT

Organization's capacity building to develop itself while enhancing the growth of other institutions that it works together with.



# AREAS OF PROJECTS IMPLEMENTATION.

In Year 2020, with funding from Partners, SEMA has implemented different projects in total of 9 districts in Singida, Morogoro and Dodoma Region

PROJECTS	DISTRICTS	PARTNERS	VALUE/FUNDS
ECCE, BONGA, CMSG, CSO AND TVET	IRAMBA, IKUNGI AND MANYONI	 Strømme Foundation	528,501,000.00Tshs
BORESHA LISHE	IKUNGI AND SINGIDA DC	 WFP World Food Programme	444,851,000.00Tshs
“INCREASING ACCESS TO JUSTICE BY STRENGTHENING THE CAPACITY OF PARALEGALS FOR IMPROVED AND SUSTAINABLE LEGAL AID”	MKALAMA, MANYONI, IRAMBA, IKUNGI, SINGIDA MC AND SINGIDA DC	 LSF	24,000,000.00Tshs
ACT 2 LOCAL CLIMATE RESILIENT WATER AND PLANNING PROGRAMME	KONDOA, CHAMWINO AND MPWAPWA	 UKaid from the British people	856,243,000.00Tshs
YOUTH ENHANCEMENT THROUGH SKILLS DEVELOPMENT-YES.	SINGIDA DC.	 HELVETAS	61,726,000.00Tshs
TULONGE AFYA	MANYONI DC	 fhi360 THE SCIENCE OF IMPROVING LIVES	103,767,000.00Tshs
ACATI	SINGIDA DC	 Co-funded by the European Union	36,561,000.00Tshs
OYE	IKUNGI DC	 SNV	6,445,000.00Tshs
WARIDI	MOROGORO DC	 USAID	108,142,000.00Tshs
SEMA VTC	SINGIDA MC	 SEMA VOCATIONAL TRAINING CENTRE	27,850,000.00Tshs
GRAND TOTAL			2,198,085,000.00Tshs

# OUR ACHIEVEMENTS/MILESTONES.

This year we have achieved a significant milestone from improving people's livelihood (where more youth and women have been able to start their Income Generating Activities –IGA), providing legal aid and education whereby people in rural areas have been able to access legal aid and finally enjoy justice.

Also, there has been a substantial reduction in stunting growth in the areas of project implementation and Enhanced knowledge and skills to integrate climate-resilience into planning and budgeting process through trainings

**IMPACT THROUGH CMSG GROUPS**  
women are involved in saving groups  
and have been able to start and expand  
their business enterprises

67%

400

## YOUTH REACHED

youth have been reached and have started their IGA such as food catering, kiosks, saloon, metal fabrication, decoration, horticulture, motorcycle repair, and maintenance, knitting, beautification.

## LIVELIHOOD

In one's life span, livelihood is the central point for survival, and it a continuous struggle both for those living in urban and rural areas. A livelihood comprises capabilities, assets (including both material and social resources), and activities required for a means of living. Livelihood can be regarded as sustainable when it can significantly contribute to coping and recovering from stress and shocks and maintain or enhance capabilities and assets both now and in the future.

In 2020, SEMA through funding from Stromme Foundation and HELVETAS, implemented livelihood projects in three districts of Ikungi, Singida, Iramba, and Manyoni Dcs, that covered two wards per district (Mpetu and Muhintiri Ward in Ikungi, Maluga, and Kyengege in Iramba, Maweni, and Makutupora in Manyoni). For HELVETAS project implemented in Singida Dc, the following wards were covered (Mtinko, Ilongerero, Ntonge, Mudida, Mwalala, Kijota, Msisi, and Ughandi).

The sole and yet ultimate objective of the projects implemented was to uplift the lives and create sustainable livelihoods of the marginalized and yet disadvantaged rural communities of Iramba, Ikungi, and Manyoni. The livelihood projects are categorized into two, youth and adult component. Through the youth projects (TVET, BONCA, and YES) 400 (254 F, 146 M) youth have been reached and have started their IGA such as food catering, kiosks, saloon, metal fabrication, decoration, horticulture, motorcycle repair, and maintenance, knitting, beautification.

For Adult's project CMSG about 3,905(667 male, 3228 female) beneficiaries have been reached and the saving is worth 371,380,610/=. 67% of women who are involved in saving groups and have been able to start and expand their business enterprises. For 2020 as the year of implementation, the livelihoods of the communities we serve have significantly improved, hence racing towards achieving the Sustainable Development Goals No: 1 and 2 focusing on ending poverty and hunger.







# EDUCATION.

---

Since ancient's times, Education remains to be a powerful tool for a man to navigate, solve and cope up with his surroundings. It shades lights where darkness has prevailed. Whether formal or informal education holds unbeatable power for individual and national development. The Education and Training Policy (2014), article 3.2.1 guarantees 'access to pre-primary and primary education, and adult literacy to all citizens as basic rights. It is with the same spirit that SEMA implements education-focused projects such as ECCE and BONGA with funding support from Stromme Foundation to provide an inclusive and better quality education to the rural marginalized and disadvantaged communities.

For the year 2020, the total of 238 (129 M, 109 F) beneficiaries has been reached through the BONGA project (involving adolescent youth aged 13-19 who are school dropouts and those who have never been to school due to various reasons) and have been provided with Life skills and Technical skills, hence creating self-employment to youth for their self –reliance. Also, through the Bonga project, 32 youths (29F, 3M) who did not know how to read and write have been taught and now can do so.

---

For the ECCE project, a total number of 304 children have been reached, and now are attending the newly constructed ECCE centers in Kisingu (Iramba District), Simbo, and Kizugu (Ikungi District), and Waraka IFAD in Manyoni Dc. In making sure that early childhood education is inclusive and of good quality, SEMA facilitated training to both centers and primary school teachers.

Capacity building to care givers and teachers with the purpose of improving technical and soft skills in delivering quality early grade education and care.

Through knowledge and skills obtained via education, youth can take advantage of it and utilize it in their business enterprises, hence improving their livelihood. Also, in making sure that, no one is left behind, SEMA for a long time has been including people with disabilities in its education projects for instance in the year 2020, 5(3M&2F) PWDs were enrolled as BONGA beneficiaries and up to this reporting period, 3(2M,1F) PWDs are advancing their knowledge at Saba Saba Rehabilitation Centre.

Also, SEMA through its vibrant and well-staffed VTC with qualified instructors provides Technical training to its customers (students) covering different courses ranging from Automobile and Domestic Electrical, Motor vehicle Mechanics to computer. For the year 2020, 46 students have graduated and are now released to the market.





# HEALTH

A healthy nation/community is a wealthy nation. This is to means that the development of any nation is crucially connected with the condition of health of its people, and health is now being accepted as an important determinant of the economic development of a nation.

**25,882**

**Beneficiaries in 85 villages have been reached and their behaviors have been influenced to adopt best nutritious practices through Boresha lishe Project is funded by WFP**

**5758**

**Members were trained on formation of VICOBA Saving groups (90 in Ikungi DC and 96 in Singida DC) reaching 186 groups a total group value was 1,050,272,805Tsh in which the current savings are TSH 344,611,800/= under Boresha lishe project.**

**13,173**

**Beneficiaries (youth and adults) were reached in Manyoni Dc and provided with different health messages such as exclusive breastfeeding to mothers with children under 5, the use of condoms and modern contraceptive methods, with the ultimate aim of improving their health status by transforming socio-economic cultural norms and supporting the adoption of healthier behaviors through USAID Tulonge Afya Project by funded by FHI360**





# GOOD GOVERNANCE AND LEADERSHIP

For any democratic state that seeks to promote the development of its people, good governance is the central force. Good governance when effectively and impartially exercised by the government contributes towards achieving meaningful socio-economic development since people can enjoy their rights as well as get answers to their demands/questions due to the responsiveness and openness of the existing government. Good governance contains the following eight observable qualities: Rule of law, Transparency, Responsiveness, and Consensus oriented equity and inclusiveness, effectiveness and efficiency, Accountability, and Participation.

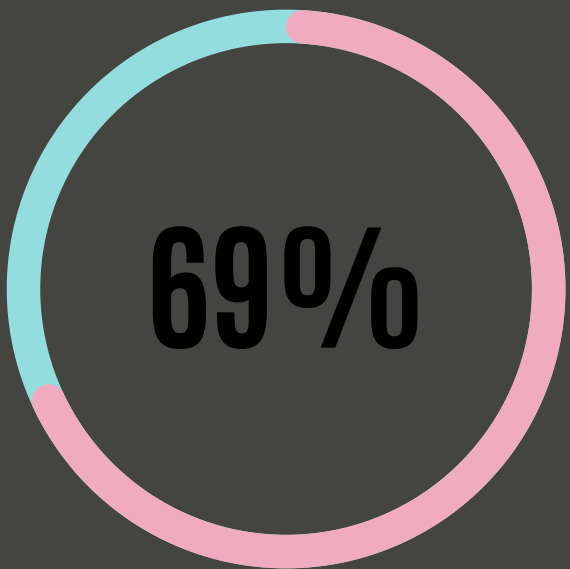


In the course of creating strong civil societies able to stand and claim their rights from the duty bearers, SEMA has implemented the CSO project, funded by Stromme Foundation whereby about 18 CBOs (Clusters, Skill net, Bonga Forum, and CAF) of Iramba, Ikungi, and Manyoni districts has been capacitated on the issues of accountability, policy influencing, and human rights, hence they are now capable of aggregating and demand their rights from the government. But also, on the side of the government, about 37 (13 F, 24 M) local government officials were provided with accountability and transparency training to enhance their responsiveness and accountability when serving the public/communities

## LEGAL AID AND EDUCATION



In the course of promoting good governance in the communities of Singida region, SEMA in the year 2020, with funding support from LSF has implemented the Legal Aid and Education project through paralegal organizations in six (6) Councils of Singida which are Mkalama, Manyoni, Iramba, Ikungi and two (2) councils of Singida District (Singida Mc). The project had the objective of making sure the community is legally empowered whereby 328,208 (172,211M, 155,997F) community members have been reached with legal education and provided legal Aid. Among the 239 cases reported, 166 cases have been resolved. Also, through the project, community members are now aware of the reporting channels and procedures to follow when an incidence that needs legal interventions occurs.



**Reported cases were resolved**



**Government officials were capacitated on accountability and transparency when serving the public communities**



# ENVIRONMENTAL CONSERVATION.

Sustainable Developments Goals no; 8, 11,12,13,14, and 15 are related to environment, the prime objective of these goals is to make sure that development is achieved without compromising the possibility of the future generations to use the environment to foster their development.

Environmental degradation caused by human activities has led to change in weather patterns and results into things like cyclones, droughts, floods, and other many phenomena which have heavily impacted the fishing, pastoralists, and farmer’s communities of the global south (developing countries, Tanzania being inclusive), thus pushing them deeper into poverty as their livelihood are heavily affected.



In the highlights of the continuing global climate change which is predicted to even be worse in the future, in 2020, SEMA in consortium with SOKOINE Memorial Foundation and IIED with the funding support from UKAID implemented the local climate resilient water and planning programme in the districts of Chamwino, Kondoa, and Mpwapwa that had ultimate objectives of enhancing capabilities of the aforementioned districts to carry out climate and gender-responsive planning and budgeting as well as building recognition of the value of customary knowledge and LGAs in the planning of the water development and establishing climate-resilient water governance.

The significant achievement of the project is that key stakeholders have recognized the value of incorporating customary knowledge and local priorities into small-scale water planning. Also, three districts of Chamwino, Kondoa, and Mpwapwa have carried out – pilot-climate resilient-gender-responsive planning and budgeting.



13



Take urgent action to combat climate change and its impacts



# ACT NOW EXCHANGE PROGRAM

SEMA in partnership with SF with funding support from NOREC has implemented a volunteer exchange program since 2017 whereby it sends to and receives volunteers from Norway. The participants are expected to learn, share and contribute their knowledge and skills during the exchange and take back home what is useful for their sending organizations.

For the 2019/2020 round of exchange, SEMA sent two volunteers to Norway, namely; Miss Alepane Mahenge and Brenda Kisusi while it received Miss Hannah and Pauline from Norway. For the year 2020/21, SEMA sent none and received none, due to the eruption of the pandemic –COVID 19, thus the participants implemented their activities in the local context Singida –Tanzania).

Overall, the significance of the exchange program cannot be underestimated, SEMA has enjoyed the contributions made by volunteers both the returnees and the Norwegians as they shared their skills and knowledge especially in youth projects such as BONGA and TVET.



## COVID-19 RESPONSE

COVID-19 Rapid Response Plan, which was not part of the programme, was prepared and implemented as a contribution to support government efforts to address the pandemic. As the pandemic affected effective implementation of the set activities through limiting gathering and traveling, a contingency plan was prepared taking into account different scenarios for the programme to adapt for its implementation and possibility of minimizing delays and achievement of the planned outcomes more than 150 ,000 people were reached in the programme areas through, provision of sanitation facilities and enhanced awareness on preventive measures against COVID-19 transmission



# INSTITUTIONAL DEVELOPMENT

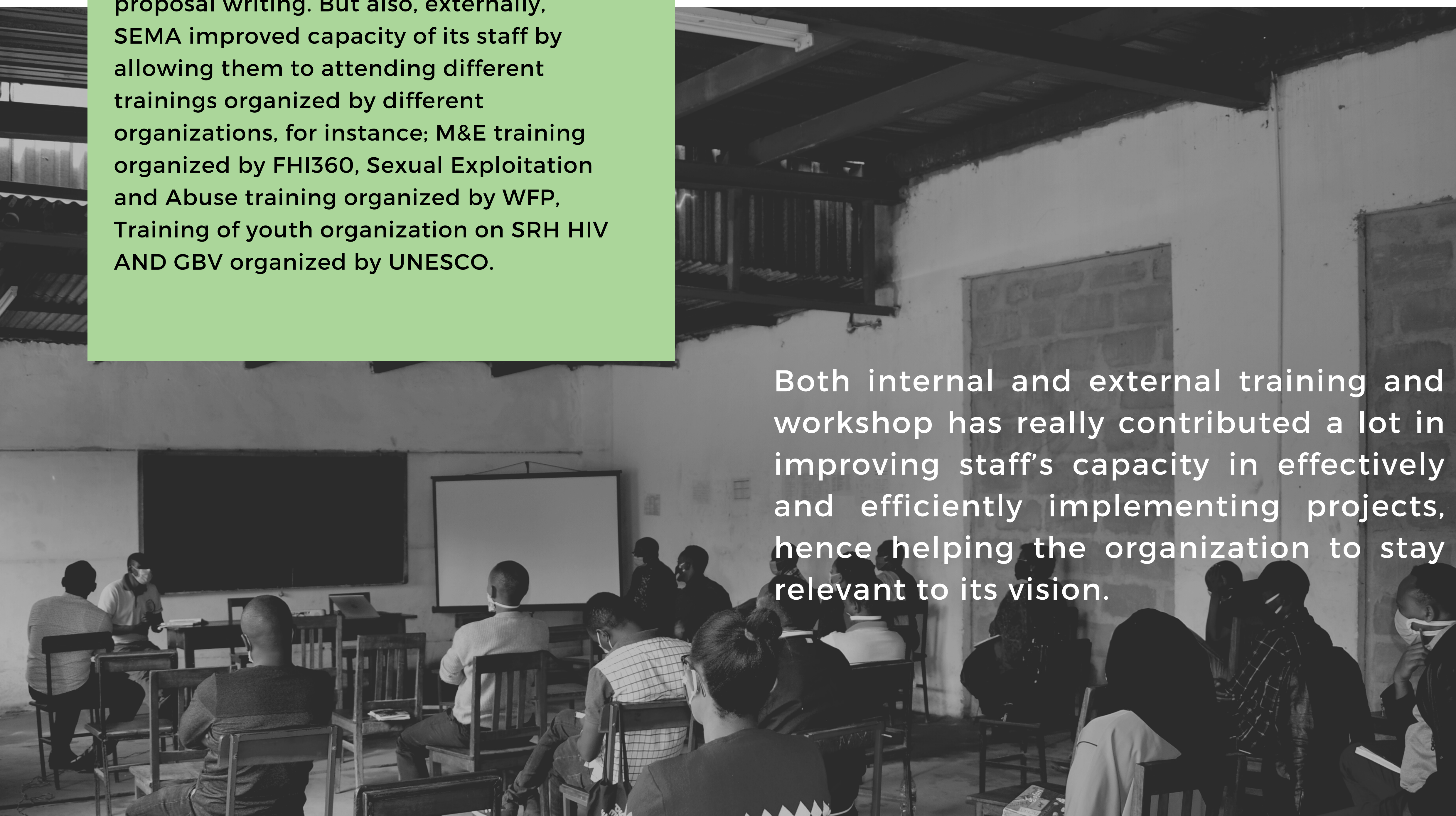
Organizations or Institutions are like human beings, they are born, live and if not taken care of they die. Not only in modern times, but since their creation, organizations both NGOs and INGOs must undergo involvement so as to be effective and stay relevant due to technological dynamics and new demands from the people they serve. Institutional development can be regarded as 'the process of improving an institution's ability to make effective use of the available human and financial resources.

In 2020, SEMA conducted internal training (after TNA) to its 29 Staff for capacity building purposes, but also to increase their familiarity with other projects. Such training included, Facilitation skills training, Policy advocacy, Time management and proposal writing. But also, externally, SEMA improved capacity of its staff by allowing them to attending different trainings organized by different organizations, for instance; M&E training organized by FHI360, Sexual Exploitation and Abuse training organized by WFP, Training of youth organization on SRH HIV AND GBV organized by UNESCO.



Concurrently, SEMA in the year 2020 played a significant role to empower the CBOs it works with such Para -legal institutions as well the existing sustainability structures (CAF, Skill Net, Clusters etc) whereby 6 paralegals institutions 16 Structures has been mentored and coached on leadership, financial management, advocacy and policy influencing etc, for their sustainability and relevance in the community.

Both internal and external training and workshop has really contributed a lot in improving staff's capacity in effectively and efficiently implementing projects, hence helping the organization to stay relevant to its vision.





# VISIBILITY AND MEDIA ENGAGEMENT

During implementation, deliberate initiatives were done to promote and ensure programme, donor's contributions and consortium partners' visibility. These include: Producing visibility materials which are programme brief, posters, calendars, leaflet, documentaries and roll-up banners: The materials contain summarized programme details including objectives, expected outcomes, strategies and activities, and description of partners. All these materials were translated into Swahili language for easy understanding to community members. Visible donor logo was placed in all these materials and all reports



Regular updates on social media: updates were regularly made on consortium partners' social media accounts (Twitter, Instagram and Facebook). This focused on posting ongoing activities, outputs from programme implementation, and important events/commemorations related to the programme. The social media posts have reached and received impression from more than 30,000 people in the implementation period



*Stay Connected @semasingida*





# Success Stories



As a youth Bonga has helped me live a meaningful life,i now generate income.  
"Elia Emmanuel 16" Ikungi Singida.



"I understand the role of household nutrition involves men too".Boresha lishe beneficiary  
Seketoure village, Singida DC



"Am happy a have a heathy baby through following 4 Healthy behaviours to keep my Child Safe."  
Beneficiary Manyoni DC



"Am able to have many customers and generate income following Entrepreneurship skills i gained"  
Beneficiary Nduu Village,Singida DC



## **OUR ENABLING ENVIRONMENT/INSTRUMENTS.**

- **Tanzania Development Vision - 2025**
- **National Youth Development Policy (2007).**
- **Education and Training Policy (2014).**
- **Small and Medium Enterprise Development Policy (2002).**
- **Relationship with Development Actors (Both Public and Private Sectors).**
- **Sustainable Development Goals.**
- **Availability of Legal and Regulatory Framework.**

## **FUTURE PLANS**

**With its desire to realize its mission, SEMA is planning to strategize and effectively utilize its human and material resources in a manner that will unleash positive yet long-lasting impacts on the communities it serves. All the plans will be implemented through the continued and positive partnership it has forged with its stakeholders such as SF, EU/WFP, HELVETAS, USAID, UKAID just a few to mention.**

**SEMA implementation of projects will be built around its robust Research and Development unit so that the projects implemented provide solutions to the communities reached.**

**Furthermore, SEMA will continue to offer consultancy services to NGOs and other institutes in its areas of expertise such as WASH, Youth projects, Proposal writing, Community microfinance, report write up and data collection.**





# FINANCE

## financial statements



### STATEMENT OF FINANCIAL POSITION FOR THE YEAR ENDED 31st DECEMBER, 2020

		2020 Tshs "000"	2019 Tshs "000"
<b>ASSETS</b>			
<b>Non - Current Assets</b>			
Property, Plant and Equipment	1	24,250	26,375
		<u>24,250</u>	<u>26,375</u>
<b>Current Assets</b>			
Trade and Other Receivables	2	94,674	97,800
Cash and Bank balances	3	140,234	187,207
		<u>234,909</u>	<u>285,007</u>
		<u>259,159</u>	<u>311,382</u>
<b>Equity and Liabilities</b>			
<b>Equity</b>			
Accumulated Surplus/(Deficit)		60,622	223,992
		<u>60,622</u>	<u>223,992</u>
<b>Current Liabilities</b>			
Trade and Other Payables	4	198,537	87,390
		<u>198,537</u>	<u>87,390</u>
		<u>259,159</u>	<u>311,382</u>





Chairman                      Director                      Date 5/3/2021



### FUNDS ACCOUNTABILITY STATEMENT FOR THE YEAR ENDED 31st DECEMBER 2020

	2020 Tshs "000"	2019 Tshs "000"
<b>Income</b>		
Grant Income	2,170,235	1,913,518
Training Income	27,850	33,785
Income from other sources	-	-
	<u>2,198,085</u>	<u>1,947,303</u>
<b>Less Expenditure</b>		
Contract & allowance payment	-	87,511
Purchase of Materials	-	-
Consultancy and Supervision	-	-
Hiring and Transport costs	1,350	9,936
Students and Volunteer costs	-	-
CLTC/CBF/PHDP/TCDD Services	-	-
Construction /Drilling Costs	-	72,052
Telephone, Electricity, & Water	210	60
Communication	5,732	1,163
Staff Costs, Training & Allow.	8,141	32,217
Motor Vehicle Expenses	300	14,526
Project Introduction	55,849	-
Training materials	523,092	219,015
Project Management costs	76,911	64,011
Printing and Office supplies	33,326	23,191
Office Operations	18,045	618
Miscellaneous Expenses	60	16,033
Improvement of Water Supply	55,594	-
VAT and Service Levy Expenses	-	-
SDL	32,993	4,228
Traveling and Meetings Cost	18,844	46,146
Bank Charges	6,501	7,554
Audit fees-Rhomic and Jumbo	-	10,353
Audit fees - Kasegenya & Co	18,933	9,000
Microsoft W/installation	-	-
Training cost and Allowances	195,047	151,881
Salaries & Wages	569,331	315,365
NSSF Employer's Contribution	54,034	29,691
Community Sensitization	264,237	607,970
Sub Granting	389,728	60,075
Paralegal capacity Gaps	440	1,255
Radio/TV Engagement	4,477	-
Meetings and Hospitality	8,760	16,445
Staff Endowment	-	-
Utilities/ Borehall Expenses	1,197	-
Monitoring and Evaluation	31,961	18,957
Depreciation	2,125	2,125
SUMATRA	200	25,855
Office and House Rent	13,334	16,807
<b>Total Expenditure</b>	<u>2,390,752</u>	<u>1,864,041</u>
<b>Surplus/(Deficit) before tax</b>	<u>(192,667)</u>	<u>83,262</u>
Tax paid	-	(11,164)
<b>Surplus/(Deficit) for the year</b>	<u>(192,667)</u>	<u>72,098</u>
Balance b/f	253,289	181,191
<b>Balance c/f</b>	<u>60,622</u>	<u>253,289</u>





Chairman                      Director                      Date 5/3/2021